

Magee Middle School

Title I AGENDA

DATE: August 15th, 023
TIME: 4:30 PM

- **Purpose of Title I for Students**
- **Curriculum**
- **Review of Assessments**
- **Requirements for Proficiency**
Explain proficiency requirements in ELA, Math, Benchmarks in addition to Arizona English Language Learner Assessment, Civics Assessment, Move on When Reading Requirements
- **Academic Family Engagement**



Magee Middle School
Title I Program
Home of the *Roadrunners*

Annual Title I Parent Meeting

August 15th, 2023

Magee Middle School

Magee Middle School

has been allocated

\$156,804

in Federal Title I dollars for

School Year 2022-2023

GRANTS





The purpose of Title I is to ensure that all students ...

...receive a high quality education

...from appropriately certified, well-trained staff

...who use evidence-based instructional methods

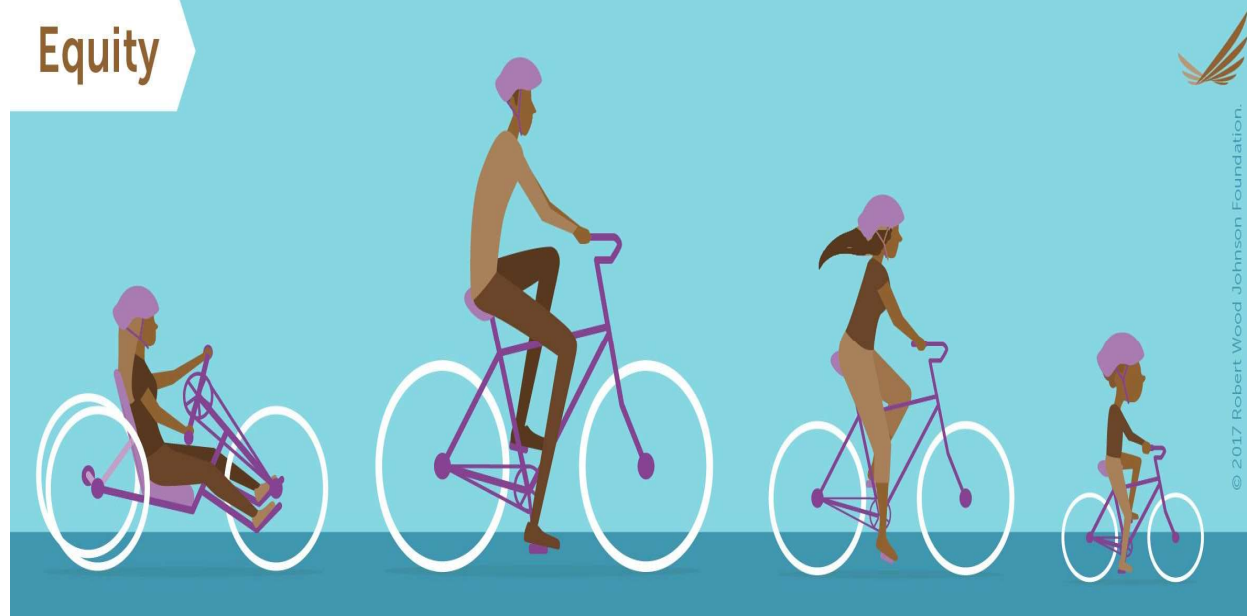
Title I Funds are for...

- supporting struggling learners with additional resources and help in **reading** and **mathematics**.

Equality



Equity



Title I funds help our school offer families

interactive learning opportunities

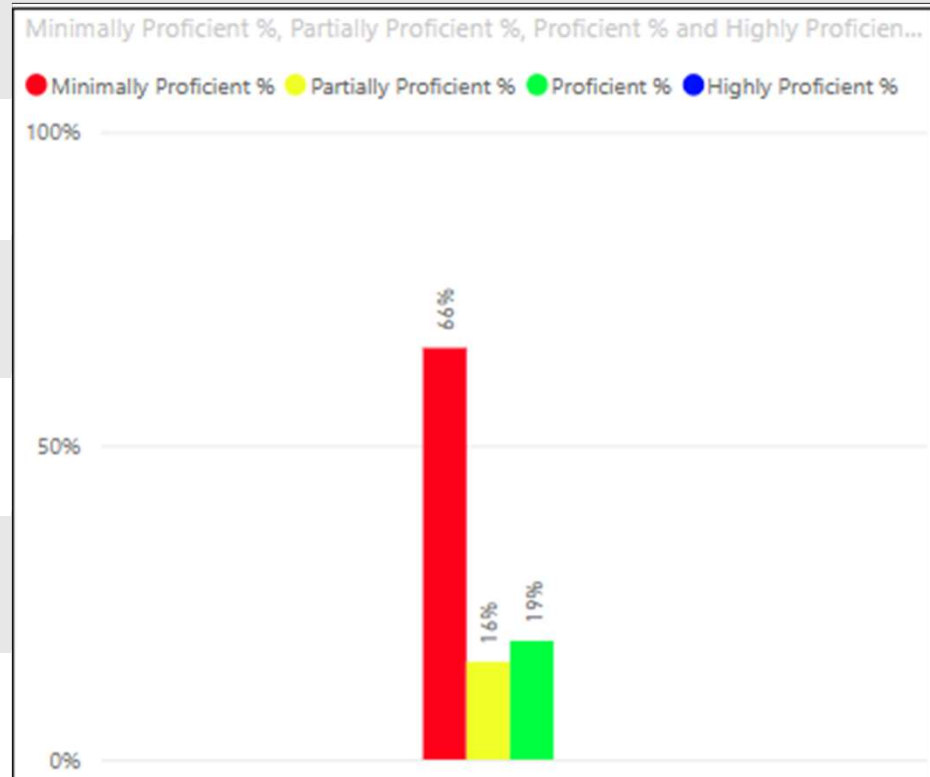
to

support student achievement at high academic levels



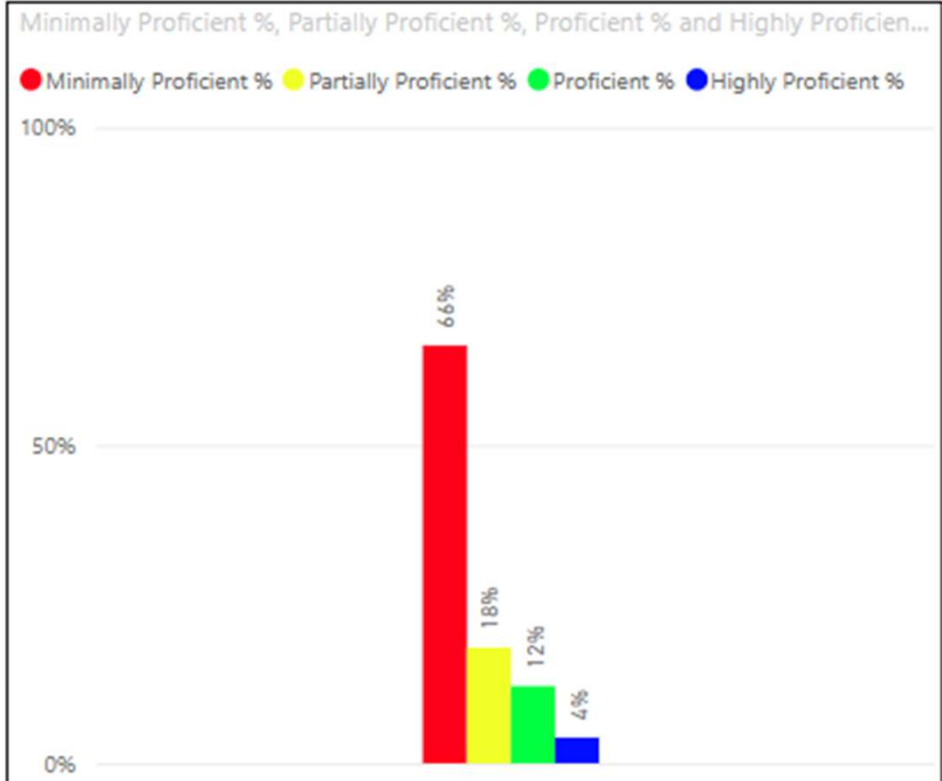
Arizona's Academic Standards Assessment (AASA)

6th Grade ELA-Reading



Arizona's Academic Standards Assessment (AASA)

7th Grade ELA-Reading

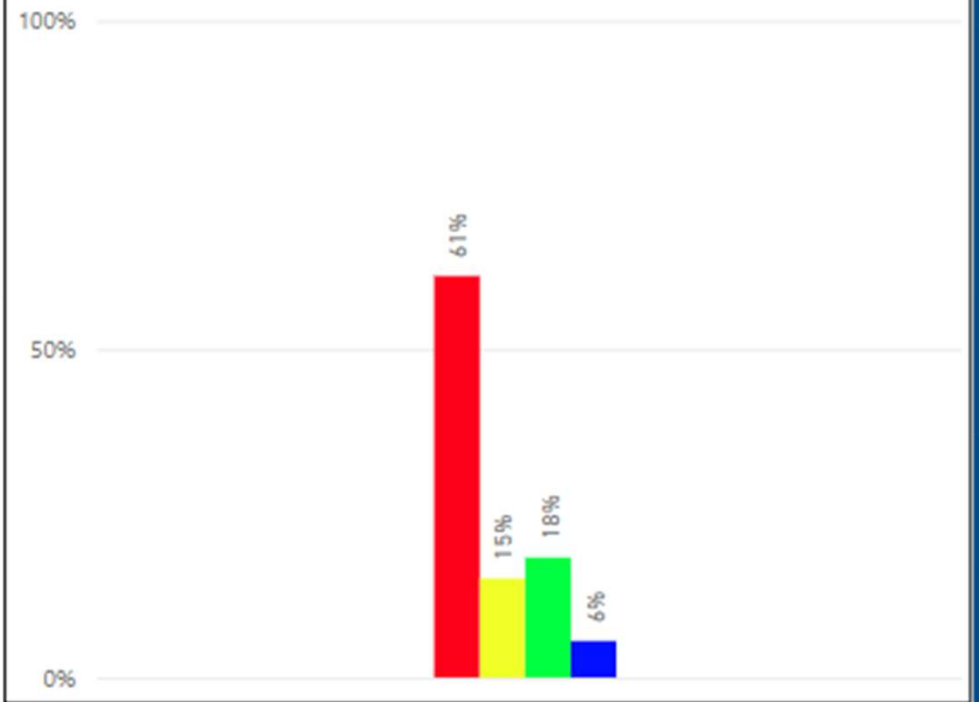


Arizona's Academic Standards Assessment (AASA)

8th Grade ELA-Reading

Minimally Proficient %, Partially Proficient %, Proficient % and Highly Proficient %

● Minimally Proficient % ● Partially Proficient % ● Proficient % ● Highly Proficient %

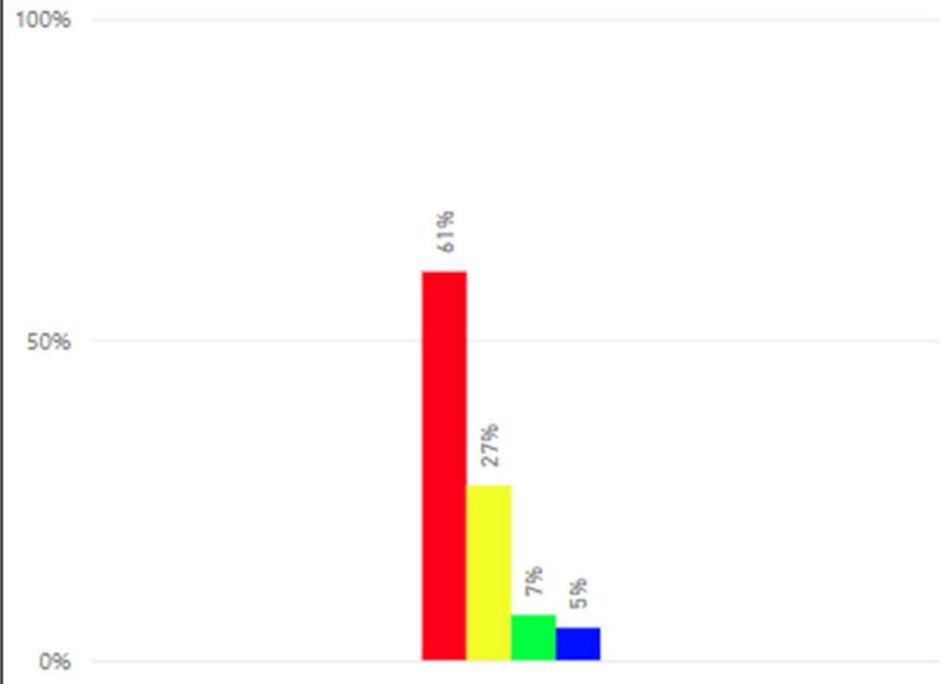


Arizona's Academic Standards Assessment (AASA)

6th Grade Math

Minimally Proficient %, Partially Proficient %, Proficient % and Highly Proficient %

● Minimally Proficient % ● Partially Proficient % ● Proficient % ● Highly Proficient %

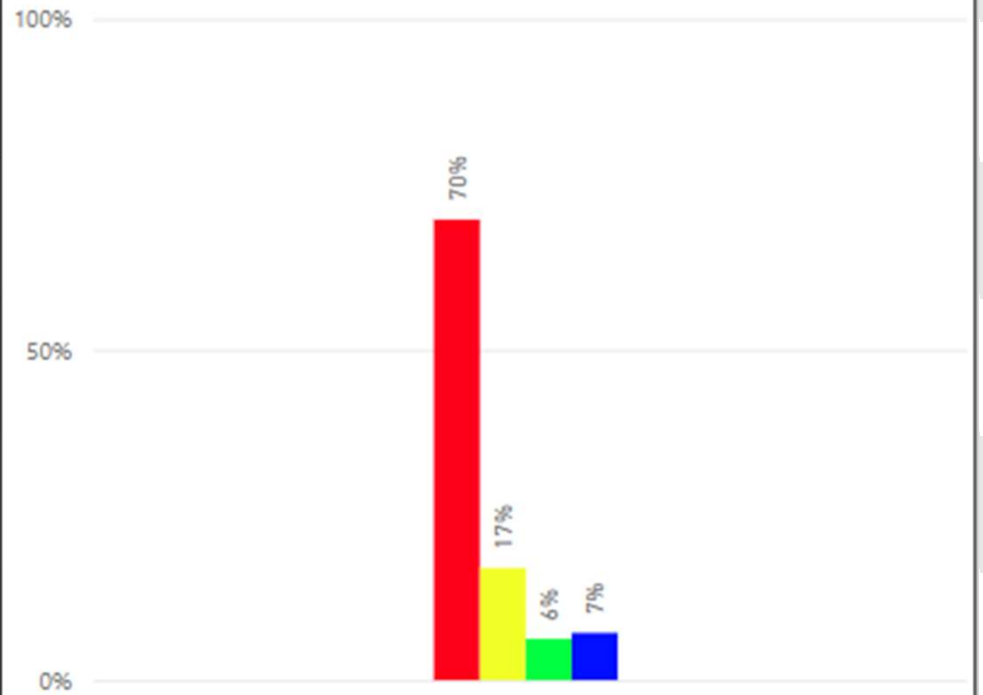


Arizona's Academic Standards Assessment (AASA)

7th Grade Math

Minimally Proficient %, Partially Proficient %, Proficient % and Highly Proficient %

● Minimally Proficient % ● Partially Proficient % ● Proficient % ● Highly Proficient %

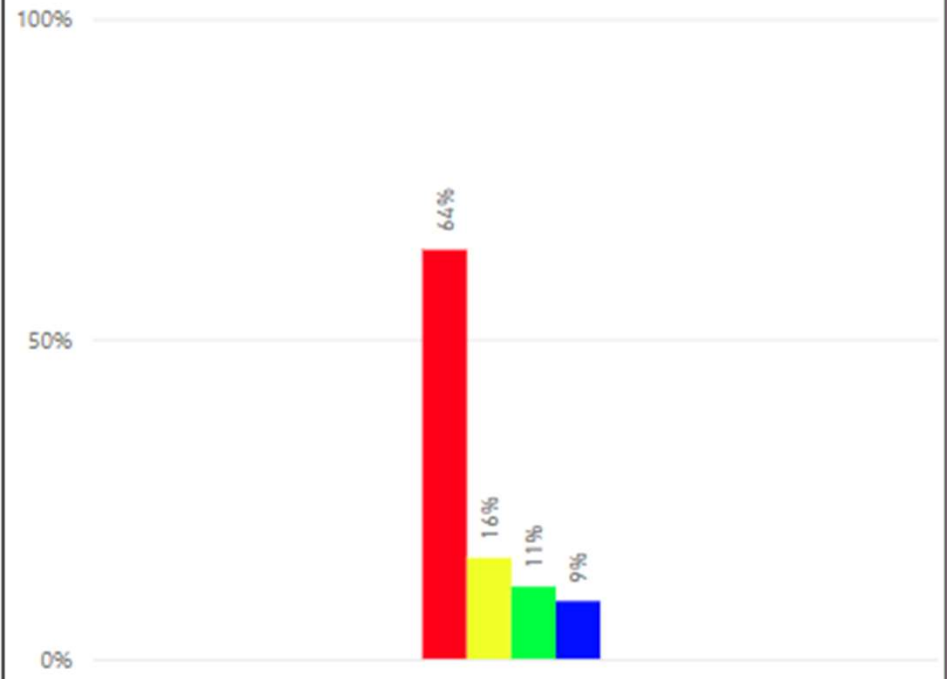


Arizona's Academic Standards Assessment (AASA)

8th Grade Math

Minimally Proficient %, Partially Proficient %, Proficient % and Highly Proficient %

● Minimally Proficient % ● Partially Proficient % ● Proficient % ● Highly Proficient %



Other Assessments

School City



SchoolCity

<https://parent.tusd1.org/>

Other Assessments

IReady



<https://student.tusd1.org/>

**Common Formative
Assessments**

**Canvas Course
Information**

Other Assessments

<https://parent.tusd1.org/>

**[Log In to Canvas
\(instructure.com\)](#)**

[Parent Canvas Directions](#)

Arizona's Academic
Standards
Assessment (AASA)

Your Student's Information

<https://parent.tusd1.org/>

School Year
All

Subject
All

Text Type
Math Grade 8

School Region
All

School Level
Middle Schools

School Name
Mages

Grade Level
All

GATE Status
All

ELL Status
All

ExEd Status
All

Gender
All

Native Tribe
All

Ethnicity (Fed)
All

Ethnicity (USP)
All

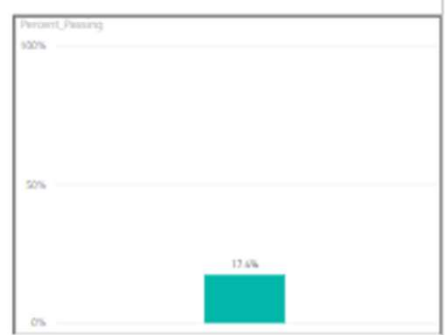
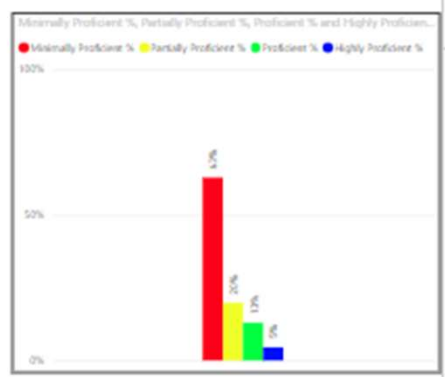
Note: For TUSD use Only
State scores are embargoed until ADE releases the official report this summer.

1,329
Students Tested

1,333
Tests taken

17.4%
Percent Passing

MS Magnet Status
All



Filters

Search

There aren't any filters to display.

ADE Letter Grade: C

The Arizona Department of Education (ADE) assigns each school a letter grade based on spring 2022 Arizona's Academic Standards Assessment results. When the information is received, we will notify our community.

School grades are based on:

- The percentage of students who passed the Arizona's Academic Standards Assessment (AASA) exam.
- The percentage of students who attained academic growth reaching or exceeding grade level expectations.
- Additional factors such as the percentage of students evaluated, graduation rate-High School Only, reclassification of English language students.

Title I funds help our school maintain / improve our school score by improving student achievement through the strategic use of federal funds.

Integrated Action Plan (IAP)

Our school leadership team composed of staff and families completed a needs assessment in the spring. We address student needs and allocate Title I resources to support:

1. Well trained staff using effective teaching practices
2. To provide intervention for struggling students
3. Families to help students achieve in school

23/24 Integrated Action Plan





Integrated Action Plan (IAP)

To ensure that all students receive a **high-quality education** we employ **appropriately certified staff**, who use research based instructional methods. Our school plan includes the following:

- 58 minutes of regular reading instruction per day.
- 58 minutes of regular mathematics instruction per day
- Teacher Training in ELA and Math
- Curriculum Service Providers to support teachers with instruction in reading, math, Character Strong, lesson resources, technology resources

Integrated Action Plan (IAP)



To support struggling learners with additional resources and help in reading and mathematics, our school plan to improve reading achievement includes the following:

- a. Reading/Math Interventions
58 minutes per day
- b. Additional Reading/Math Classes
58 minutes of additional instruction daily
- c. Reading/Math Tutors
 - Tutoring will be held upon approval of a new Grant Coordinator.
- d. After School reading



School Integrated Action Plan (IAP)

Academic Family Engagement

Our plan includes steps to promote academic family engagement:

- **District Parent Involvement Policy**
- **School Parent Involvement Policy**
- **Title I Parent Compact**
- **TUSD Family Centers**
- **Newsletter, website, Facebook**





Parents Right to Know

You have the right to request:

- The qualifications of your child's teacher and instructional staff
- Your child's level of achievement based on required state assessments

You must be informed within 4 weeks if:

- Your child is being taught by a teacher who does not meet the appropriately certified requirements of the state

All of this information must be in a language and format that is understandable to you.



Important Dates to Remember

- Parent Teacher Conference
 - September 20-22nd
 - February 8-9
- Student Progress Reports
 - September 6th
 - November 21st
 - February 8th
 - April 23rd
- Student Report Cards
 - October 9th
 - December 19th
 - March 12th
 - May 28th
- Updates to the school integrated action plan, the parent policy and compact
 - February 2024-April 2024

For more information or to access the school Integrated Action Plan Contact:

Martin Muecke at martin.Muecke@tUSD1.org

520-731-5000



Thank you!

For more information or to access the school Integrated Action Plan
Contact:

Martin Muecke at email Martin.Muecke@tusd1.org

School phone #520-791-5000